



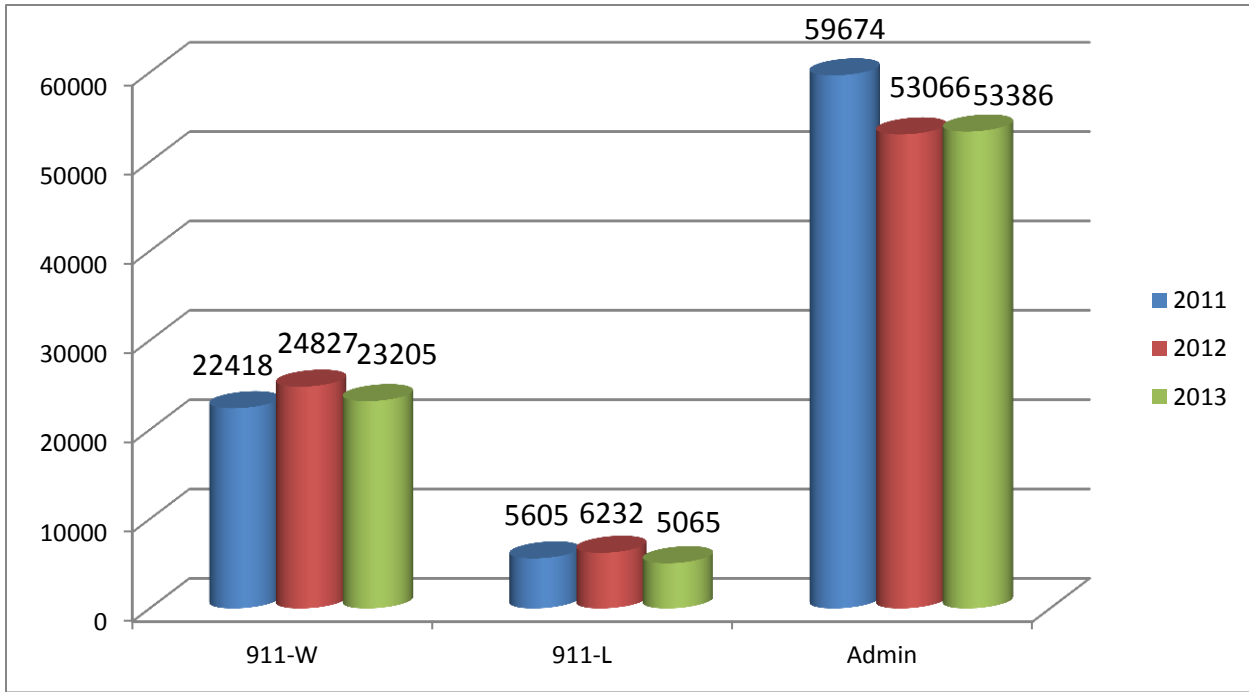
# Christian County Emergency Services

2011 – 2013 Comparison Report

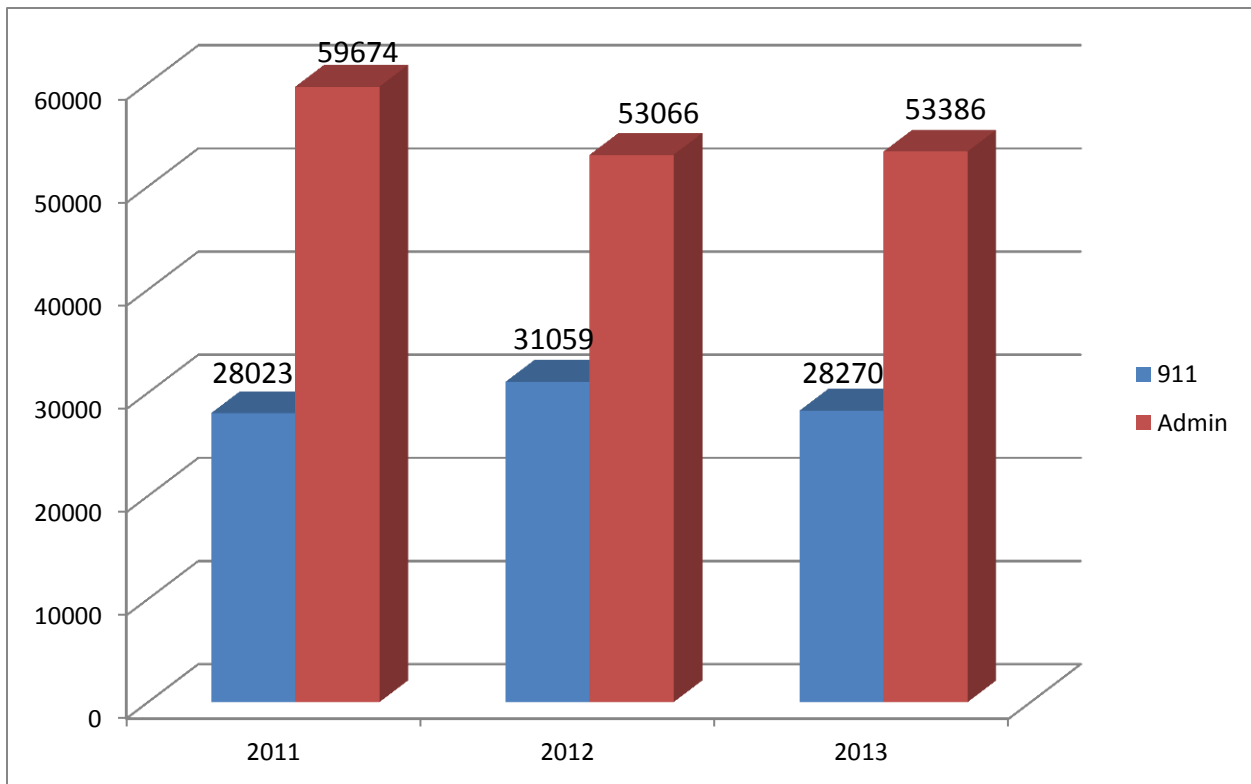
## Table of Contents

Incoming 9-1-1 and Administrative Telephone Calls .....	2
Total Incoming 9-1-1 vs. Administrative Telephone Calls.....	2
Law Enforcement Events .....	3
Fire and EMS Events.....	4
Average Number of Events per Hour.....	5
Events by Day of Week .....	5
Combined 9-1-1 and Administrative Telephone Calls .....	6
Total Number of CAD Events .....	6
Total Events Type of Discipline .....	7
Total Events by Dispatch Position.....	8

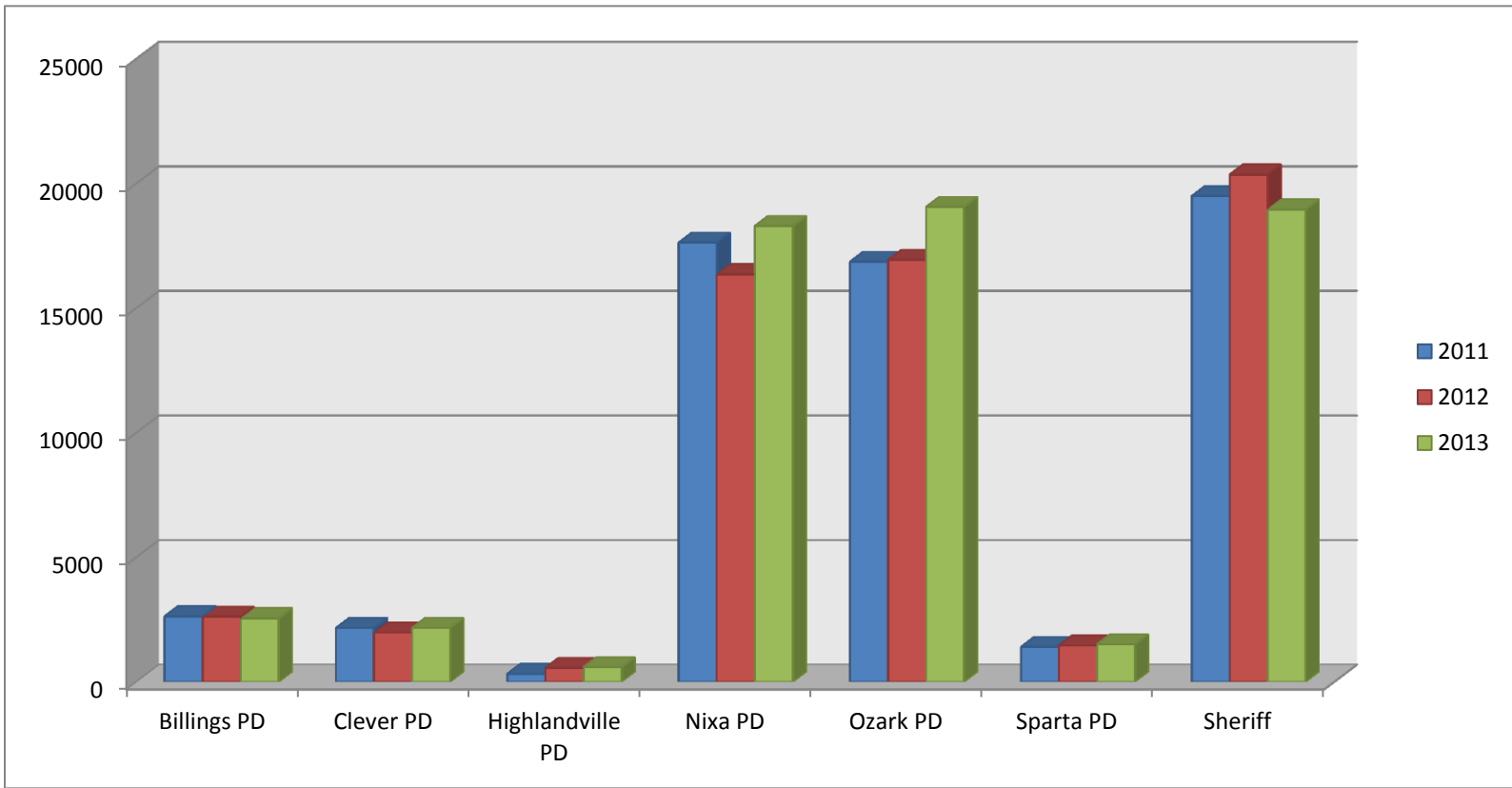
## Incoming 9-1-1 and Administrative Telephone Calls



## Total Incoming 9-1-1 vs. Administrative Telephone Calls

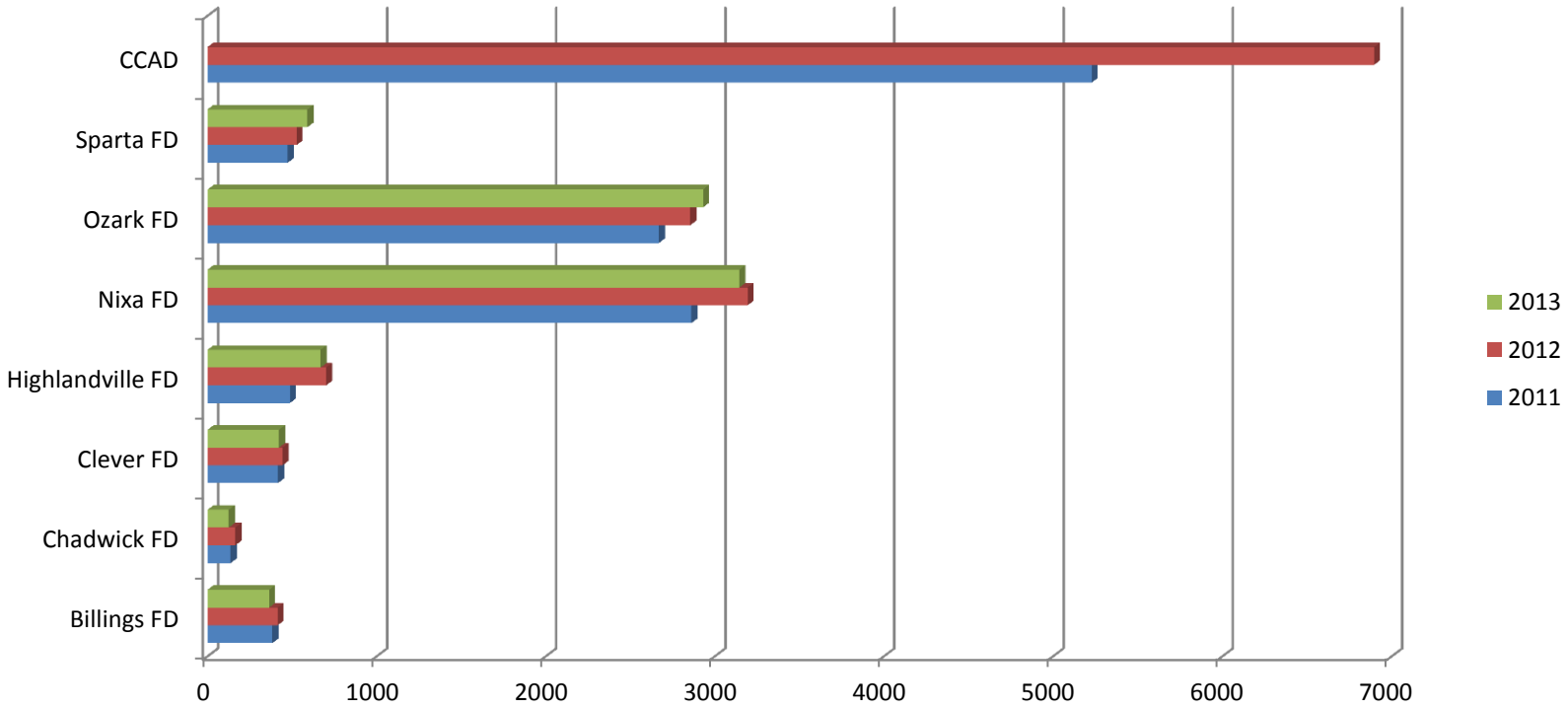


## Law Enforcement Events



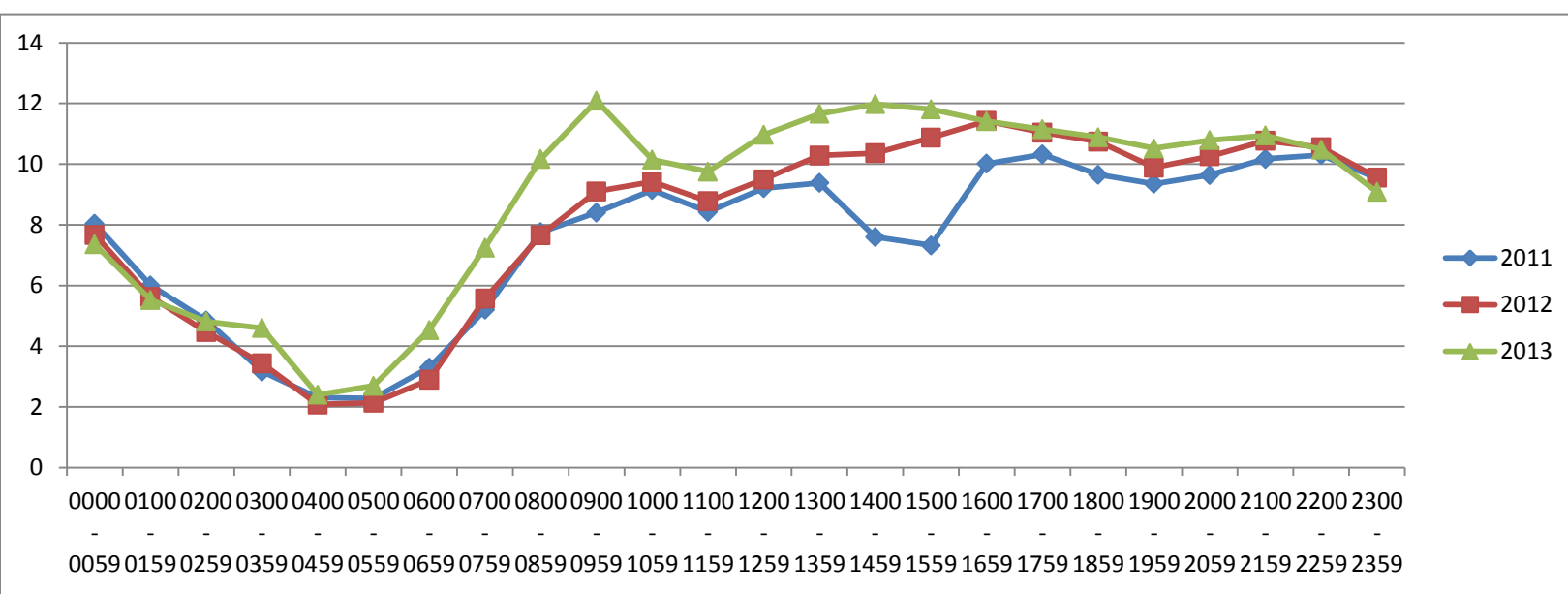
	Billings PD	Clever PD	Highlandville PD	Nixa PD	Ozark PD	Sparta PD	Sheriff
2011	2633	2164	325	17629	16861	1406	19497
2012	2620	1985	563	16358	16936	1466	20361
2013	2556	2168	592	18296	19064	1511	18962

## Fire and EMS Events

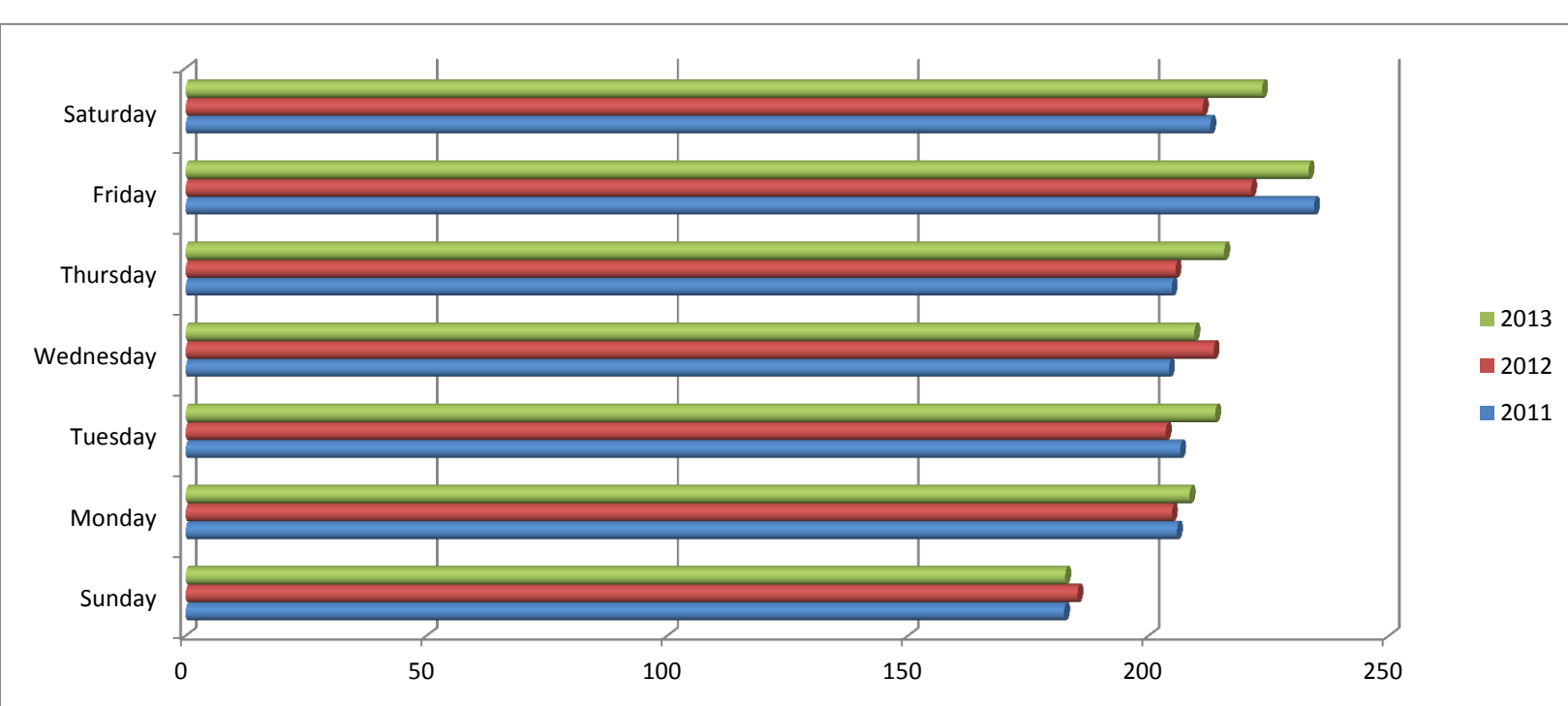


	Billings FD	Chadwick FD	Clever FD	Highlandville FD	Nixa FD	Ozark FD	Sparta FD	CCAD
2011	384	137	417	487	2862	2670	474	5228
2012	415	165	444	702	3195	2856	527	6897
2013	365	126	423	669	3146	2931	591	5705

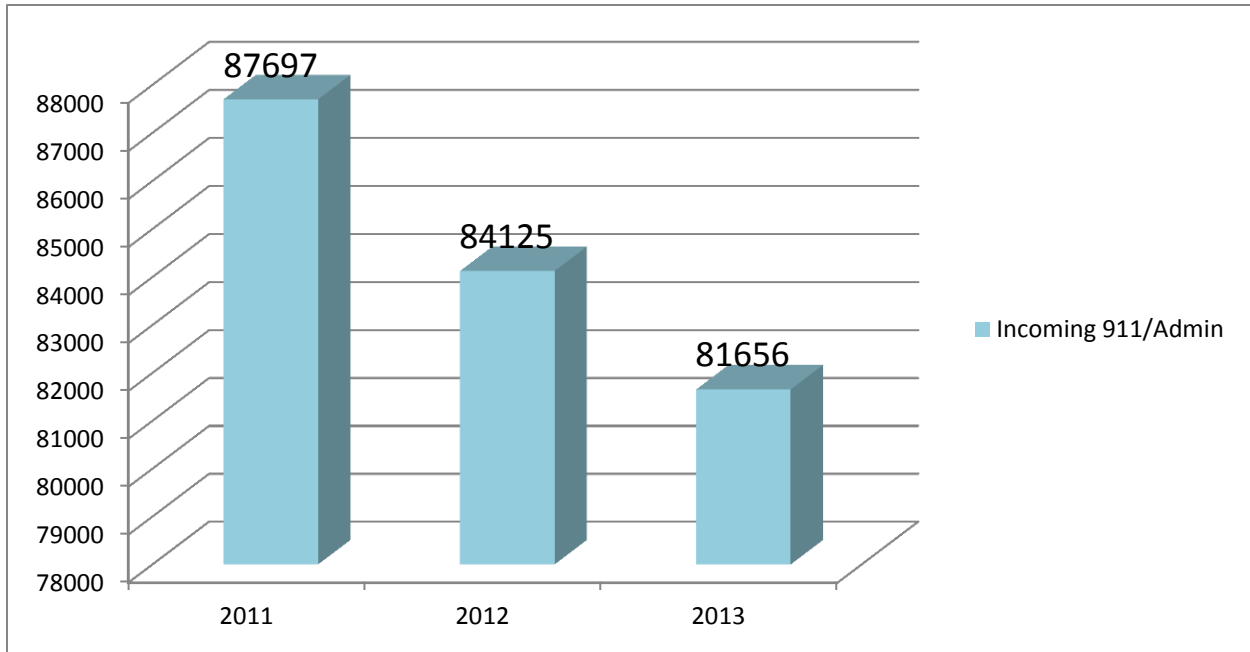
## Average Number of Events per Hour



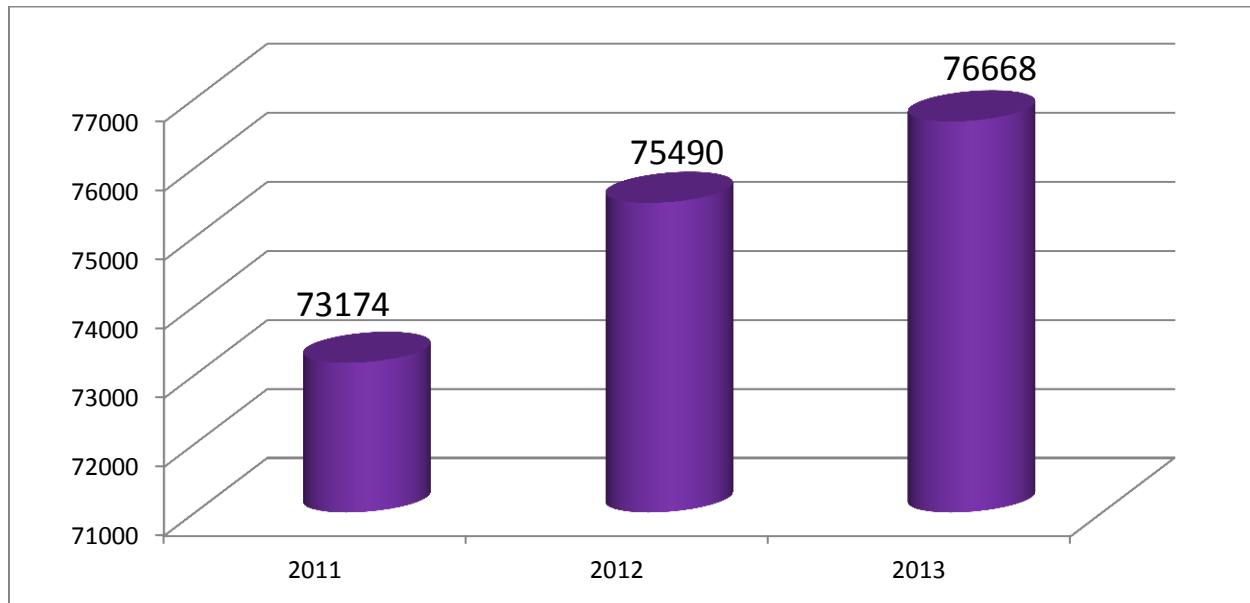
## Events by Day of Week



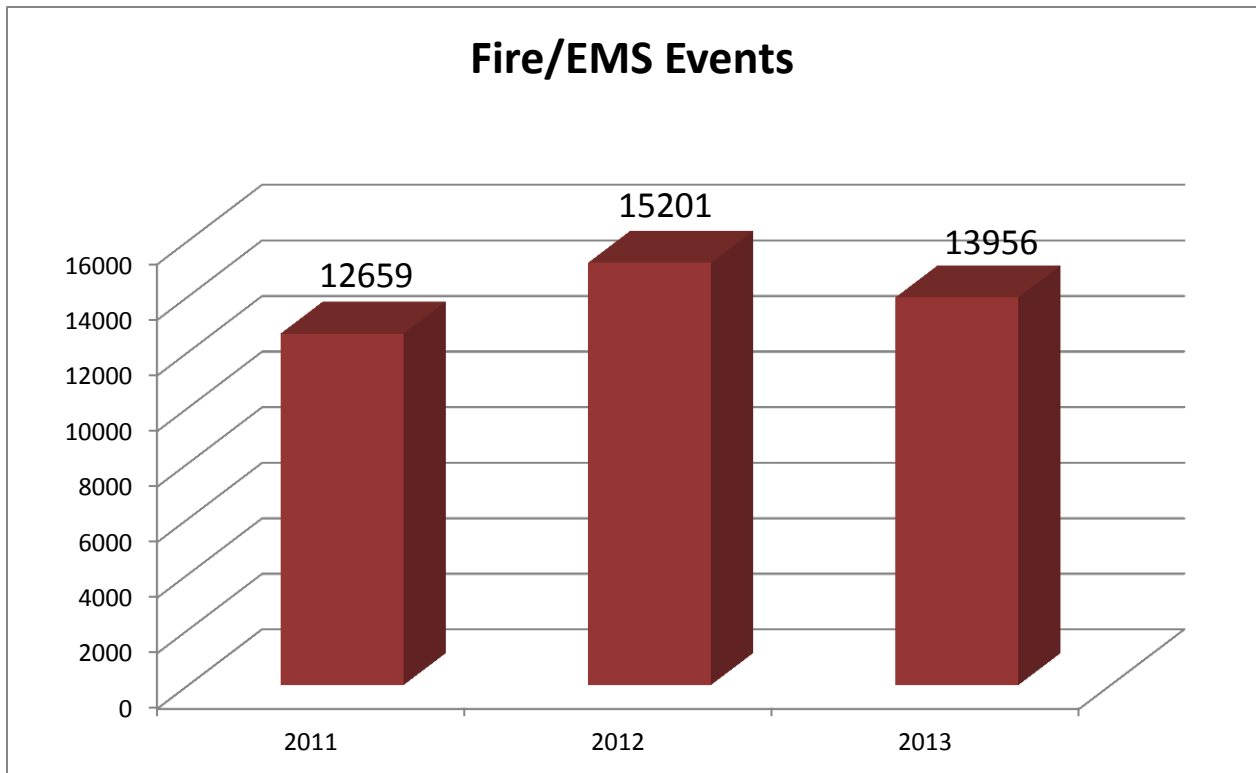
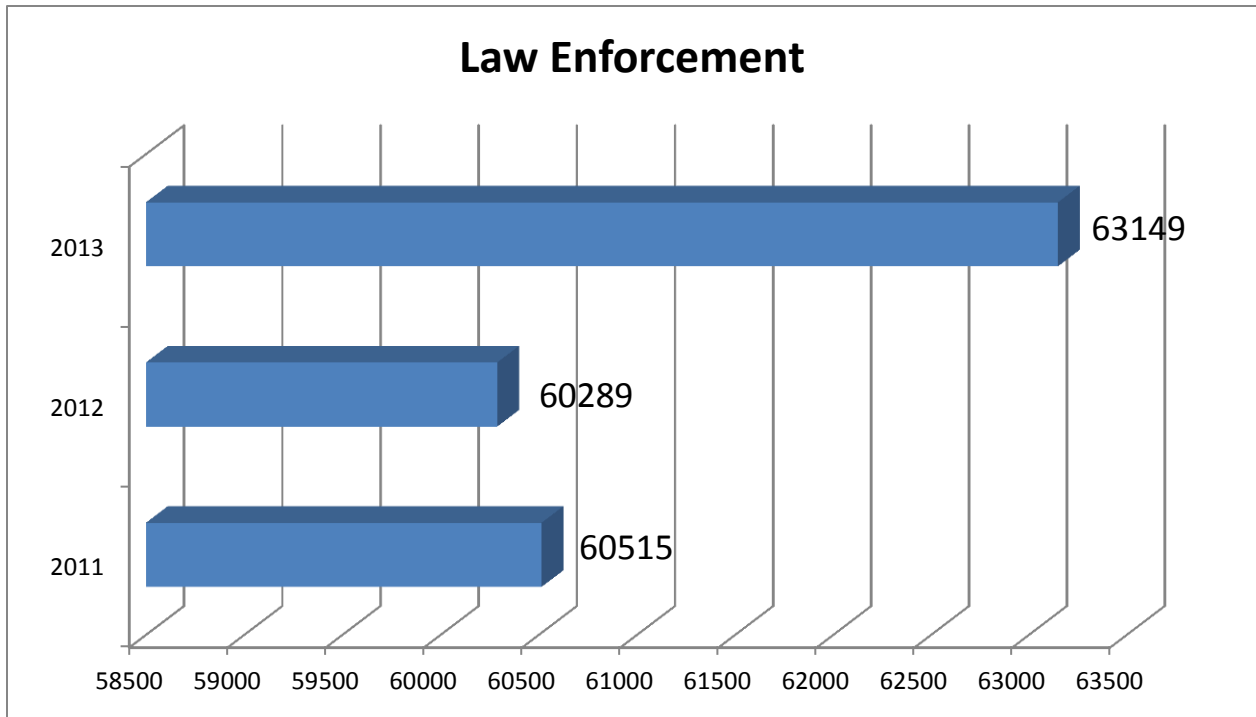
## Combined 9-1-1 and Administrative Telephone Calls



## Total Number of CAD Events



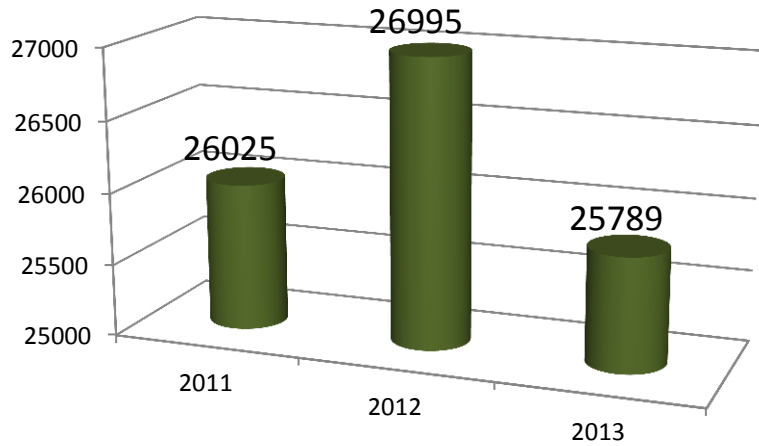
## Total Events Type of Discipline



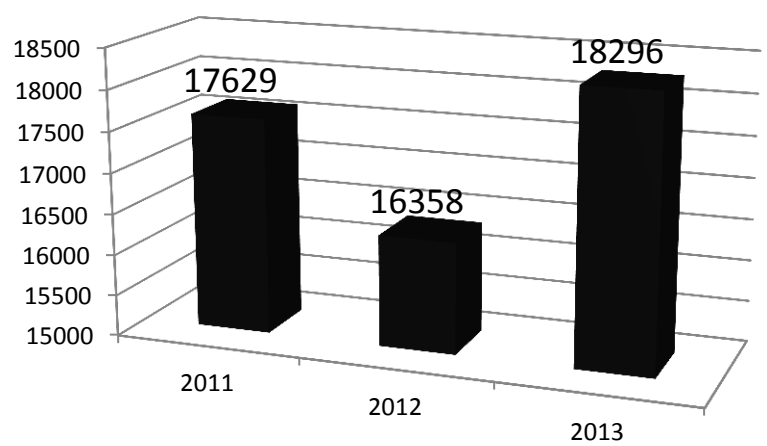


## Total Events by Dispatch Position

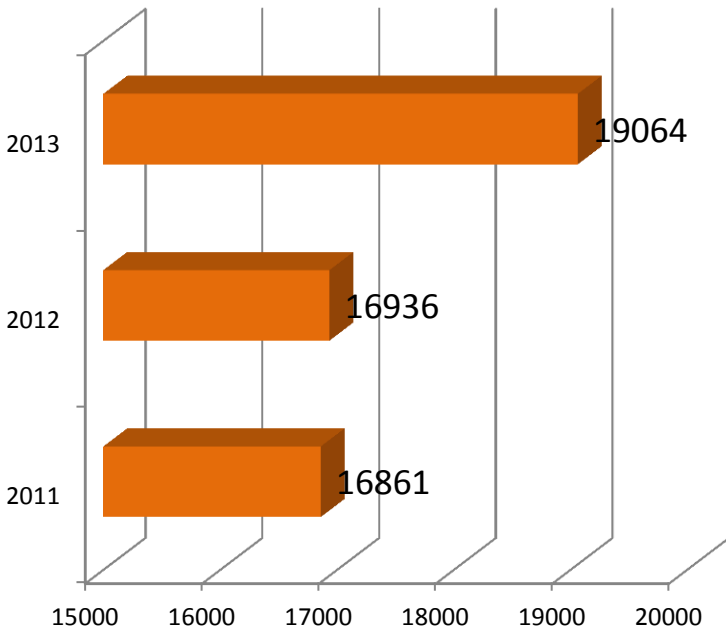
### County Dispatcher



### Nixa Dispatcher



### Ozark Dispatcher



### Fire Dispatcher

